

Embedded IoT

Solution  
Ready  
Platform

# Edge Intelligence Server (EIS)

Building Up Edge-to-Cloud Applications with  
Integrated Hardware plus Software

EIS-D110/EIS-D120/EIS-D150

**WISE-Agent**



*IoT Connectivity*

**Pre-configured  
Microsoft Azure**

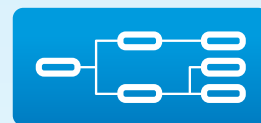
**ADVANTECH**



**WISE-PaaS**

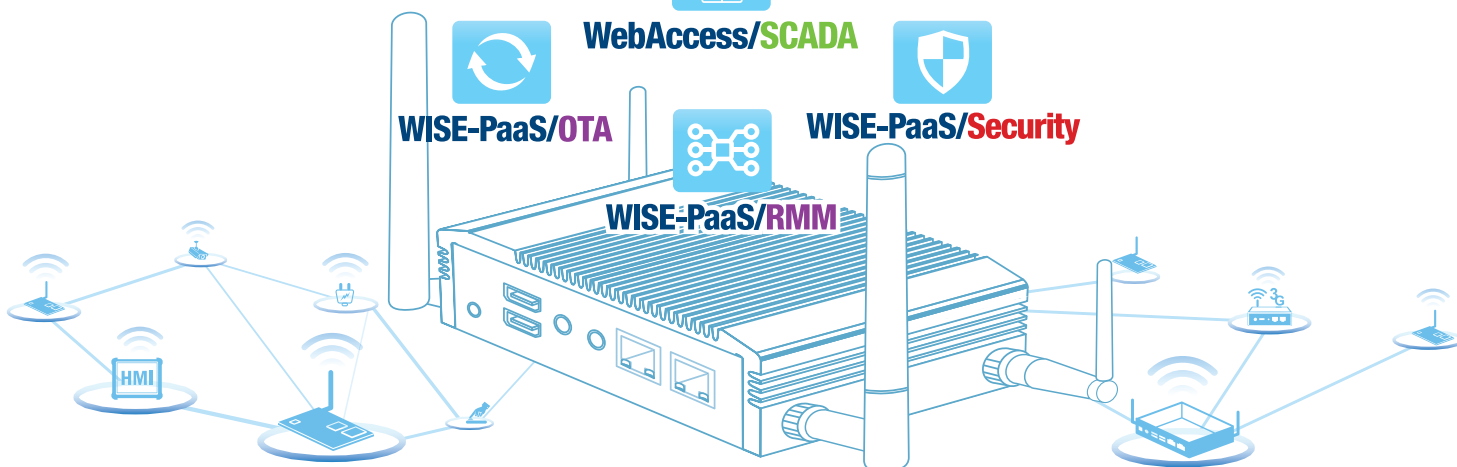
IoT Software Platform

**Node-RED**



*Data Manageability*

**WebAccess/IMM** **WebAccess/HMI**  
**WebAccess/SCADA**  
**WISE-PaaS/OTA** **WISE-PaaS/Security**  
**WISE-PaaS/RMM**



**ADVANTECH**

*Enabling an Intelligent Planet*

**intel** IoT Solutions  
Alliance  
Premier

**Microsoft**



EIS  
Website

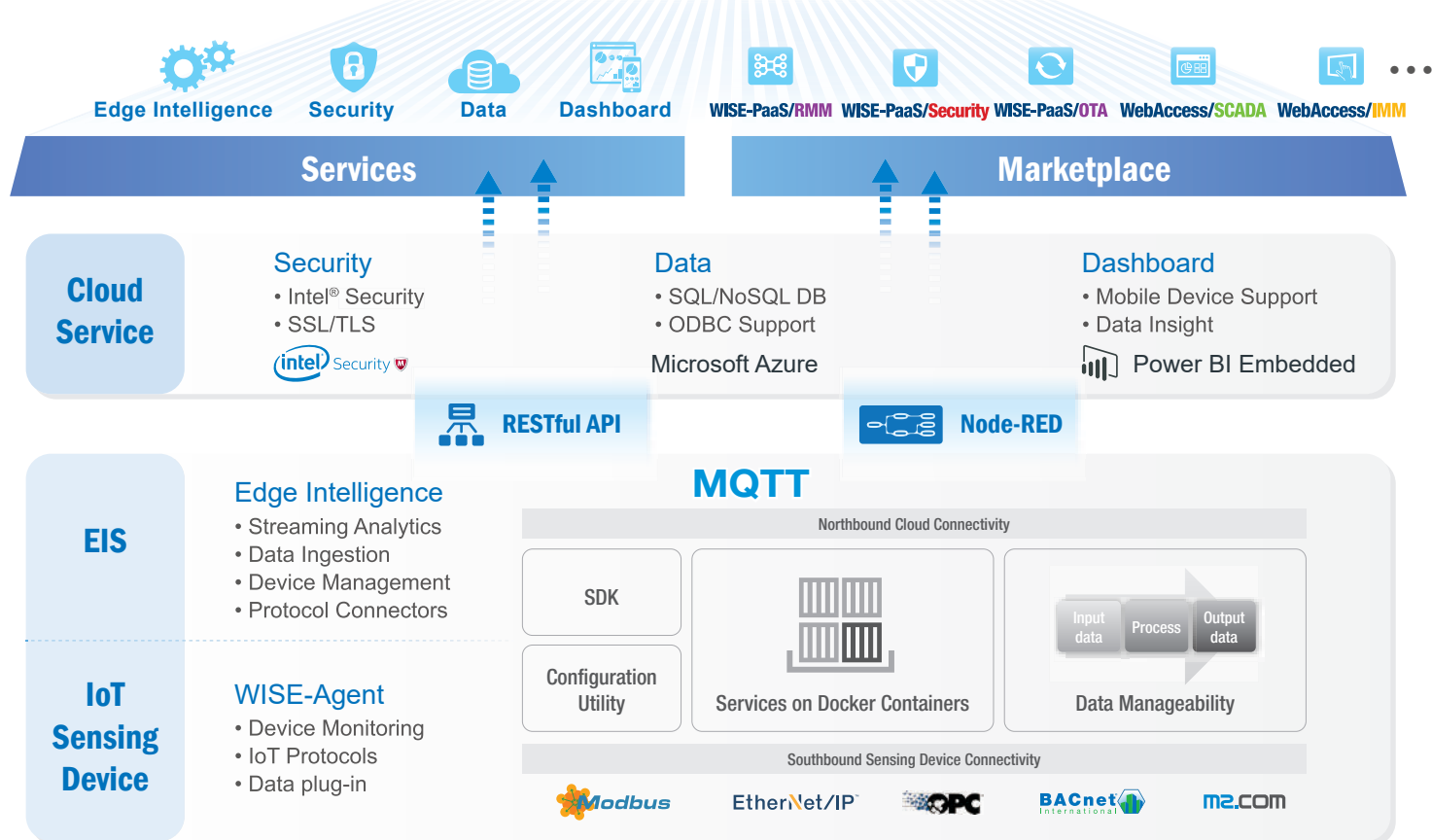
# Building Up Edge-to-Cloud Applications with Integrated Hardware plus Software

## Introducing Edge Intelligence Server

Advantech Edge Intelligence Server accelerates IoT implementation by providing integrated solutions with edge computer, WISE-PaaS software packages, IoT development tools, pre-configured cloud services, plus the flexibility to add on more software modules from the WISE-PaaS marketplace that enable IoT connectivity, data manageability and analytics in the edge.

## Software Architecture

### WISE-PaaS IoT Software Platform Services



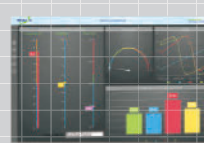
## Dashboard and Development Tools



WISE-PaaS/RMM

### Remote Monitoring and Management

- Centralized IoT device HW & SW status management
- Built-in 15+ real-time monitoring widgets
- up to 1000 device connections



WebAccess/SCADA

### Smart SCADA Management

- Dashboard Editor & Viewer
- Widget Library & Widget Builder
- Cross Browser & Device Viewing



WebAccess/IMM

### Interactive Multimedia Management

- Visualization interface
- Drag and drop operation
- Multi-display support: Distinct/ Clone/ Extended mode



SDK

### IoT Development Tools

- Node-RED Data Flow Logic Designer
- Dashboard Builder
- Protocol Plug-in SDK & Configuration Tools

# EIS Solution Block Diagram

## WISE-PaaS

*Built-in*

### WISE-PaaS/RMM

#### Remote Monitoring and Management

Open & standard IoT device remote monitoring and management platform

### WISE-PaaS/OTA

#### Remote Software Update

Remote software update, includes 3rd party software  
(Integration version in WISE-PaaS/RMM)

### WISE-PaaS/Security

#### Centralize Security Management

Centralize devices, data protection and remote back-up and recovery solution  
(Integration version in WISE-PaaS/RMM)

### WebAccess/IMM

#### Interactive Multimedia

Centralized content editor and dispatch management for interactive multimedia player

### WebAccess/SCADA

#### Smart SCADA

Data collection and graphical interfaces for supervisory management  
(Limited version with 16 tags access ability)

### WebAccess/HMI

#### Human Machine Interface

A stand-alone, machine-level HMI to a distributed visualization solution  
(Limited version with 16 tags access ability)

## WISE-Agent

*IoT Connectivity*



### Edge IoT Application Development

Open Plug-in SDK and sample code for sensor and data collection and conversion.



### Data Format Integration

Supports ODBC plug-in for database and file type(CSV, MDB) data integration.



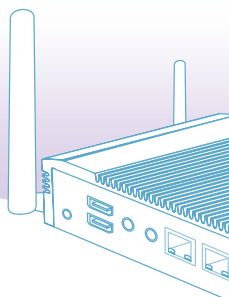
### Industrial Protocol Connectivity

Provides standard protocols(Modbus/ OPC/ MQTT) for sensor and devices data collection.



### I/O and Sensor Compatibility

Integration tested with Advantech M2.COM, ADAM and WISE-4000 series.



# Great Benefits for IoT System Designers



### Ready-to-run Package

All Advantech WISE-PaaS software built-in, including WISE-PaaS/RMM, OTA and Security as general module for IoT applications and vertical IoT solution WebAccess/SCADA, IMM, HMI



### Simplify IoT Deployment

Provides software development kits (SDKs) for data collection, pre-processing and management, with technical documents and sample code. Gives developers an easy start.



### Quick Cloud Connection

Provides pre-configured Azure IoT service in WISE-PaaS Marketplace. Quickly and easily connect your IoT application with Azure Cloud.

## Node-RED

### Data Manageability

**RESTful API**  
GET PUT POST DELETE  
**250+**

#### Easy Application Development

Overall 250+ RESTful APIs are provided for application developer to access related functionality and IoT data of WISE-PaaS software.



#### Smart Data Processing

Pre-integrated Data Flow Logic Designer Node-RED for data processing and flow control (Sample code included).



#### Zero Downtime

Data cache storage for secured data transfer, retain data when connection is lost; forward it after connection is reestablished.

## Pre-configured Azure Service

### Option



#### Power BI Embedded

##### Data Reporting

Pre-configuration with DB and data, 720 hours Power BI usage embedded



#### Virtual Machine

##### System Deployment

4 Core A3 VM for up to 100 devices connection



#### Web APPs

##### Web Services Center

Use your existing skills to code in your favorite language



#### Databases

##### Big Data Storage

1T storage with 99.99% reliability

#### Device Management Package

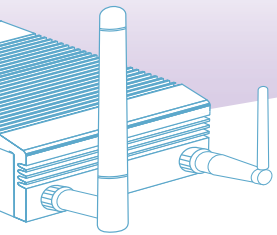
**Virtual Machine** + **WISE-PaaS/RMM**  
100 devices connection and management ability  
40 WISE-Points/ Month

#### Data Intelligence Package

**Virtual Machine** + **Databases**  
**Power BI Embedded** + **Web APPs**  
60 WISE-Points/ Month

#### Get your service on WISE-PaaS Marketplace

Microsoft® Azure Services are available using WISE-Point digital currency, which applies in the WISE-PaaS Marketplace.  
<http://wise-paas.advantech.com/marketplace/>



## Product Offerings

### EIS-D110



- Intel® Celeron® J1900
- WES7E/ Win 10 Enterprise
- COM, GbE
- Wi-Fi, Bluetooth

**WISE-PaaS**  
Built-in

### EIS-D120



- Intel® Celeron® J1900
- WES7E/ Win 10 Enterprise
- COM, GbE, iDoor
- Wi-Fi, Bluetooth

**WISE-PaaS**  
Built-in

### EIS-D150



- 6th Gen Intel® Core™ U-series
- WES7E/ Win 10 Enterprise
- COM, GbE, iDoor
- Wi-Fi, Bluetooth

**WISE-PaaS**  
Built-in

# WISE-PaaS Marketplace Online Software Store

## Discovering and Shopping for Your Own IoT Applications

With Advantech Exclusive Software Service, we provide the WISE-PaaS Marketplace, an online software shopping website that provides IoT Cloud Services, Security Services, WISE-PaaS IoT Services and Solution Ready Package for Edge Intelligence Server (EIS). WISE-PaaS Marketplace integrates with IoT eco-partners on cloud and software solutions to accelerate building blocks for IoT developers. Software offerings include:

### Cloud Services

Leverage Microsoft Azure and ARM mbed cloud Services to provide Cloud Services and pre-configured Packages

### Security Services

Integrate Intel® Security and Acronis to secure devices and data by Central Management Platform

### WISE-PaaS IoT Services

Provide all WISE-PaaS software series with full function version and access point/ manage devices expansion

### Solution Ready Package for EIS

Based on EIS products, provide pre-configured Azure services packages for different verticals and scenarios

Customers can join the WISE-PaaS Alliance, an IoT partner program launched by Advantech that helps partners build IoT applications with various of software and cloud services; they can then access the WISE-PaaS Marketplace and choose software packages online with their WISE-Points. WISE Points are used as Advantech's digital currency for reducing the difficulty of cross-software purchases, and membership is required in order to have Points. Advantech supports alliance members in achieving their business and application goals; we share our resources and knowledge to help alliance members leap the IoT gap.



### Cloud Services



### Security Services



### WISE-PaaS IoT Services



### Solution Packages

## WISE-PaaS

Marketplace WISE-Point



# Ordering Configuration Table

## Package Offerings

|                     | EIS-D110   | EIS-D120   | EIS-D150   |
|---------------------|--|--|--|
| CPU                 | Intel® Celeron® J1900  | Intel® Celeron® J1900  | Intel® 6th Gen Core™ i5 6300U                      |
| RAM/Storage         | 4GB /64GB SSD  | 4GB /64GB SSD  | 4GB /64GB SSD                                      |
| OS                  | Windows Embedded Standard 7E<br>Windows 10 IoT Enterprise 2016   |  |  |
| I/O Interface       | HDMI x2, GbE x2,<br>RS232/422/485x1  | HDMIx1, VGAx1, GbE x2<br>RS-232 x2, RS-232/422/485 x2,<br>iDoor. | HDMI x1, VGA x1, GbE x2,<br>RS232/422/485x4, iDoor |
| Wireless Networking | IEEE 802.11 a/b/g/n<br>Bluetooth 4.0 HS  | N/A  | IEEE 802.11 a/b/g/n/ac<br>Bluetooth 4.1 HS         |
| Dimensions(WxHxD)   | 133.8 x 43.1 x 94.2 mm   | 264.5 x 68.4 x 133.0 mm  | 260 x 44 x 140.2 mm                                |
| Software Package    | <div> <div>WISE-PaaS/RMM</div> Remote Monitoring and Management <div>WISE-PaaS/OTA</div> Remote Software Update <div>WISE-PaaS/Security</div> Centralize Security Management </div> <div> <div>WebAccess/SCADA</div> Smart SCADA <div>WebAccess/HMI</div> Human Machine Interface <div>WebAccess/MMI</div> Interactive Multimedia </div> |  |  |
| Development Tools   | <ul style="list-style-type: none"> <li>Node-RED Data Flow Logic Designer&amp; Dashboard Builder</li> <li>Protocol Plug-in SDK &amp; Configuration Tools</li> </ul>   |  |  |
| Order Information   | EISD110W1SS641-BTO<br>(WES7E/64G SSD: 2016/ 12)  | EISD120W1DS641-BTO<br>(WES7E; 2017/01)                           | EISD150W1DS641-BTO<br>(WES7E; 2017/02)             |
|                     | EISD110W1SS141-BTO<br>(WES7E/128G SSD : 2016/ 12)  | EISD120E1DS641-BTO<br>(Win 10; 2017/02)                          | EISD150E1DS641-BTO<br>(Win 10 ; 2017/02)           |
|                     | EISD110E1SS641-BTO<br>(Win 10 ; 2017/01)   |  |  |

## Optional Configuration

| Option 100 : WISE-Points        | Option 200 : Pre-configured Azure Package          |                  |
|---------------------------------|--|------------------|
| [101] 100 Points : 98DPWSPAP1   | [201] Azure Device Management Package : 9806WMDMP0 | 40 Points/ Month |
| [102] 2,000 Points : 98DPWSPA0A | [202] Azure Data Intelligence Package : 9806WMDIP0 | 60 Points/ Month |

## Order in 3 Easy Steps

Go AOnline

1.



Step 1: Login & Register

Add to Cart

2.



Step 2: Configuration

Confirm Order

3.



Step 3: Check & Submit

### Advantech Headquarters

No. 1, Alley 20, Lane 26, Rueiguang Road, Neihu District, Taipei, Taiwan 11491  
Tel: 886-2-2792-7818 Fax: 886-2-2794-7301  
www.advantech.com

US/Canada: 1-888-576-9668  
Europe: 00800-2426-8080/8081  
China: 800-810-0345/8389  
Taiwan: 800-777-1111  
Japan: 0800-500-1055  
Korea: 080-363-9494/9495

Singapore: 65-6442-1000  
Malaysia: 1800-88-1809  
Australia: 1300-308-531  
Thailand: 66-2-248-3140  
Indonesia: 62-21-7511939  
Mexico: 1-800-467-2415

# ADVANTECH

Enabling an Intelligent Planet



Online Catalog

8600000309