

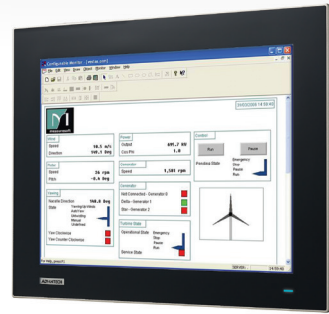
# Advantech » Touch Panel Computers



TPC-1581WP



TPC-1551T



FPM-7151T

## Thin Clients *(User selects SSD/HDD and O/S; 24VDC)*

IP66 (-20 to + 60C)	Size, Resolution, Brightness nits	CPU, RAM	LAN, I/O, slots
TPC-651T-6E3AE	6.5" VGA TFT LED LCD, 640x480, 800	Intel Atom 1.75GHz, 4/8GB	2x GB LAN, 2x Serial, 2x USB, 1x PCIe
TPC-1051WP	10.1" TFT LED LCD, 1280x800, 300	Intel Atom 1.75GHz, 4/8GB	2x GB LAN, 2x Serial, 2x USB, 1x PCIe
TPC-1251T	12.1" XGA TFT LED LCD, 1024x768, 600	Intel Atom 1.75GHz, 4/8GB	2x GB LAN, 2x Serial, 2x USB, 1x PCIe
TPC-1551T	15" XGA TFT LED LCD, 1024x768, 400	Intel Atom 1.75GHz, 4/8GB	2x GB LAN, 2x Serial, 2x USB, 1x PCIe
TPC-1751T	17" SXGA TFT LED LCD, 1280x1024, 350	Intel Atom 1.75GHz, 4/8GB	2x GB LAN, 2x Serial, 2x USB, 1x PCIe

## High Performance *(User selects SSD/HDD and O/S; PCT Multi-Touch; 24VDC)*

IP66 (0 to 55C)	Size, Resolution, Brightness nits	CPU, RAM	LAN, I/O, slots
TPC-1581WP	15.6" WXGA TFT LED LCD, 1366x768, 300	Intel Core i3 1.7GHz, 4/8GB	2x GB LAN, 2x Serial, 2x USB, 1x PCIe, iDoor
TPC-1881WP-433AE	18.5" HD TFT LED LCD, 1366 x 768, 300	Intel Core i3 1.7GHz, 4/8GB	2x GB LAN, 2x Serial, 2x USB, 1x PCIe, iDoor
TPC-1881WP-473AE	18.5" HD TFT LED LCD, 1366 x 768, 300	Intel Core i7 1.7GHz, 4/8GB	2x GB LAN, 2x Serial, 2x USB, 1x PCIe, iDoor

## Special Purpose *(User selects SSD/HDD and O/S; PCT Multi-Touch; 24VDC)*

IP69K (0 to 50C)	Size, Resolution, Brightness nits	CPU, RAM	LAN, I/O, slots
IPPC-5211WS	21.5" Full HD TFT LED LCD, 1920x1080, 300	Intel Celeron J1900, 4/8GB	1x GB LAN, 4x Serial, 2x USB, 1x PCIe
IP65 (0 to 55C)	Size, Resolution, Brightness nits	CPU, RAM	LAN, I/O, slots
SPC-1881WP	18.5" WXGA, TFT LED LCD, 1366x768, 300	Intel Core i3 1.7GHz, 4/8GB	All - M12 2x GB LAN, 1x RS-232, 1x USB, 1x PCIe
TPC-1881WPH*	18.5" Full HD TFT LED LCD, 1920x1080, 350	Intel Core i5 1.9GHz, 4/8GB	2x GB LAN, 2x Serial, 2x USB, 1x PCIe, iDoor

\* Certified with UL CID2 for hazardous environments

## Flat Panel Monitors

Wide - 16x9	Size, Resolution, Brightness nits	Touch type, Video ports	Rating, Operating temp, Power
FPM-7151W-T	15.6" WXGA TFT LED LCD, 1366x768, 300	Multitouch, VGA + DVI-D	IP66, 0 to 55C, 24 VDC
FPM-7181W-T	18.5" WXGA TFT LED LCD, 1366x768, 300	Multitouch, VGA + DVI-D	IP66, 0 to 55C, 24 VDC
FPM-7211W-T	21.5" Full HD TFT LED LCD, 1920x1080, 300	Multitouch, VGA + DVI-D	IP66, 0 to 55C, 24 VDC
New - 4x3	Size, Resolution, Brightness nits	Touch type, Video ports	Rating, Operating temp, Power
FPM-7121T	12.1" XGA (1024x768) TFT LED LCD (600)	True-Flat Resistive Touch, VGA + DP	IP66, -20 to 60C, 24 VDC
FPM-7151T	15" XGA (1024x768) TFT LED LCD (400)	True-Flat Resistive Touch, VGA + DP	IP66, -20 to 60C, 24 VDC
Value - 4x3	Size, Resolution, Brightness nits	Touch type, Video ports	Rating, Operating temp, Power
FPM-5151G	15" XGA TFT LCD, 1024x768, 400	Resistive Touch, VGA + DVI-D	IP65, 0 to 50C, 24 VDC
FPM-5171G	17" SXGA TFT LCD, 1280x1024, 350	Resistive Touch, VGA + DVI-D	IP65, 0 to 50C, 24 VDC
FPM-5191G	19" SXGA TFT LCD, 1280x1024, 350	Resistive Touch, VGA + DVI-D	IP65, 0 to 50C, 24 VDC