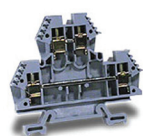


# AutomationDirect » Terminal Blocks

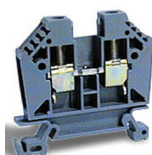
Part Number	Box Qty	AWG	Screw Type Terminal Blocks	Multipole Jumper	Separator	End Cover	Tags Numbers	Tag Blank
DN-T12-A	100	24 - 12	Feed Through	DN-24J2Y	DN-S1210	DN-EC1210	DN-LA100	DN-LAB
DN-T10-A	100	24 - 10	Feed Through	DN-24J4Y	DN-S1210	DN-EC1210	DN-L50	DN-LB
DN-T8	50	22 - 8	Feed Through	DN-24J8	SN-S86	DN-EC86	DN-L50	DN-LB
DN-D10-A	50	24 - 10	Double	DN-24J4Y	NA	DN-DEC10	DN-L50	DN-LB
DN-D10X-A	50	24 - 10	Double Jumpered	DN-24J4Y	NA	DN-DEC10	DN-L50	DN-LB
DN-TL14-A	25	26 - 14	Triple Level	DN-2JL14B-A	NA	DN-EC14	DN-LAT100-A	DN-LATB-A
DN-G10	50	24 - 10	Grounding	NA	NA	NA	DN-L50	DN-LB
DN-F10	50	24 - 10	Fuse Block - 5mm	NA	NA	Included	DN-L50	DN-LB
DN-F10L24	10	24 - 10	Fuse Block w/LED 24 VDC	NA	NA	Included	DN-L50	DN-LB
DN-F10L110	10	24 - 10	Fuse Block w/LED 110 VAC	NA	NA	Included	DN-L50	DN-LB
DN-F6	25	20 - 6	Fuse Block - 1/2in	NA	NA	Included	DN-L50	DN-LB
DN-F6L24	10	20 - 6	Fuse Block w/LED 24 VDC	NA	NA	Included	DN-L50	DN-LB
DN-F6L110	10	20 - 6	Fuse Block w/LED 110 VAC	NA	NA	Included	DN-L50	DN-LB
DN-EB35	50		End Blocks for all above					
DN-R35S1	20		DIN rail for all above					



DN-D12-A



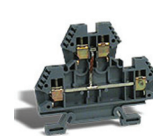
DN-D10-A



DN-T8



DN-D10-A



DN-D10X-A



DN-TL14-A



DN-F6



DN-F6L



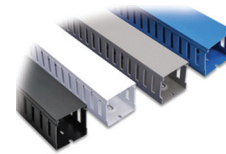
DN-F10



DN-F10L



DN-G10



Wiring Duct

# AutomationDirect » Wiring Duct

Additional Sizes and Colors Available

Part Number	Gray Slotted Wiring Duct (Including Cover)	Slot Width	Finger Width	Maximum Numbers Wires Per Duct Based on 50% Fill Capacity				
				12AWG	14AWG	16AWG	18AWG	22AWG
T1-1010G-1	1.00" W x 1.00" H	0.2	0.3	22	29	36	44	134
T1-1015G-1	1.00" W x 1.50" H	0.31	0.47	31	39	48	59	180
T1-1022G-1	1.00" W x 2.25" H	0.31	0.47	45	57	71	85	261
T1-1030G-1	1.00" W x 3.00" H	0.31	0.47	59	75	92	113	341
T1-1522G-1	1.50" W x 2.25" H	0.31	0.47	77	98	121	148	449
T1-1530G-1	1.50" W x 3.00" H	0.31	0.47	102	130	160	196	593
T1-2230G-1	2.25" W x 3.00" H	0.31	0.47	156	199	246	302	912
T1-2240G-1	2.25" W x 4.00" H	0.31	0.47	194	247	306	375	1132
Gray Thin Finger Series (including cover)								
T1E-1015G-1	1.00" W x 1.50" H	0.16	0.24	31	39	48	59	180
T1E-1022G-1	1.00" W x 2.25" H	0.16	0.24	45	57	71	85	261
T1E-1530G-1	1.50" W x 3.00" H	0.16	0.24	102	130	160	196	593
T1E-2230G-1	2.25" W x 3.00" H	0.16	0.24	156	199	246	302	912
T1E-3030G-1	3.00" W x 3.00" H	0.16	0.24	214	272	337	412	1246