

# USB / RJ45 ports with flat stylish design

New product addition for the flush silhouette switches



USB2.0

RJ45

### Flush silhouette

Flush bezel projects only 2mm from the front of the panel. Ideal for applications where a safe and hygienic surface is required.

### Cable attached

Plastic encapsulated structure of the rear part prevents the cable from falling off. (USB port only)

### Accessories with IP65/67 protection

Rubber and transparent plastic covers available. Water- and dust-proof.

## Specification / Performance



### USB2.0

Part No.	CW1X-USB20-1M	CW4X-USB20-1M
Connector standard	USB2.0 compliant	
Operating temperature	-25 to +70°C (no freezing)	
Storage temperature	-25 to +70°C (no freezing)	
Storage temperature (when packaged)	-10 to +50°C (no freezing)	
Relative humidity	0 to 90%RH (Max) (no condensation)	
Connecting cycles	1,500 times	
Connecting force	35N max.	
Removal force	10N min.	
Locking screw recommended tightening torque	1.2 to 1.5 N·m	
Bezel material	PBT	
Cable	AWG28, USB2.0, Standard cable, PVC shield (black)	
Protection degree	IP20 IP65/67 (accessory attached)	

### RJ45

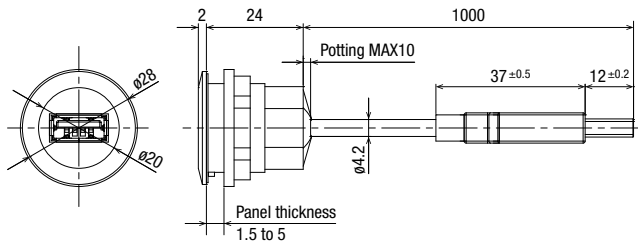
Part No.	CW1X-RJ45	CW4X-RJ45
No. of contacts	8 pin	
Operating temperature	-25 to +70°C (no freezing)	
Storage temperature	-25 to +70°C (no freezing)	
Storage temperature (when packaged)	-10 to +50°C (no freezing)	
Relative humidity	0 to 90%RH (Max) (no condensation)	
Connecting cycles	750 times	
Transmission performance	ISO/IEC 11 801: 2002 EN 50 173-1: Cat.6 Class EA 10/100 Mbit Ethernet 1/10 Gbit Ethernet	
Locking screw recommended tightening torque	1.2 to 1.5 N·m	
Bezel material	PBT	
Protection degree	IP20 IP65/67 (accessory attached)	

## Ports



Shape	Bezel color	Part No.	Remarks
	Black	<b>CW1X-USB20-1M</b>	Cable length: 1m
	Metallic	<b>CW4X-USB20-1M</b>	USB2.0 TypeA
	Black	<b>CW1X-RJ45</b>	No. of contacts: 8 pin
	Metallic	<b>CW4X-RJ45</b>	

## Dimensions

### USB2.0



## Accessories

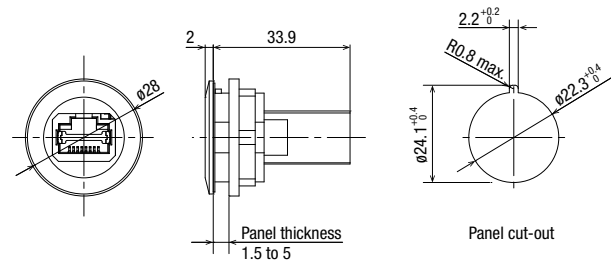
Name / Shape	Material	Color	Part No.	Protection Degree
	TPE	Black	<b>CW9Z-D1X1</b>	IP65/67
	[Lens] Polycarbonate [Main body] Polyamide [Gasket] NBR	Translucent	<b>CW9Z-D1X2</b>	IP65/67

Note 1) Accessories can only be used for CW series ports (CW1X / CW4X).  
Note 2) For the instruction sheet, read the QR code.



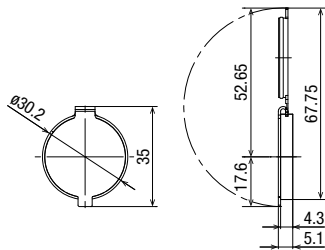
All dimensions in mm.

### RJ45

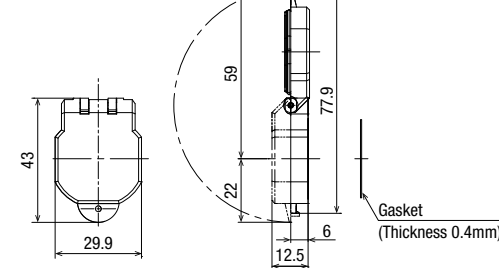


## Dimensions for Accessories

### Rubber cap CW9Z-D1X1



### Plastic cover CW9Z-D1X2






• Panel thickness when CW9Z-D1X1/D1X2 is mounted: 1.5 to 5 mm

Recommended for use with the following products:

### Flush Silhouette Switches

**Flush Silhouette Switches**

<b>LB/LBW</b>  18.2, 22.3, 18.2, 22.5, 18.2x24.2	<b>LW</b>  25.3, 24.5	<b>CW</b>  22
---	--	--

LB series: Slim 2mm-thick bezels for stylish panels.  
LBW series: Projects only 2mm from the panel. Smart appearance with large surface for secure operation.



Create stylish panel with flush bezels projecting only 2.0 mm from panel front. Easy to install/remove, and ideal for panels that require cleanliness and safety.

Flush bezel projecting only 2.5 mm from panel front, with short, 39.9 mm depth behind the panel. Third-generation safety structure.

### APEM Products



**Pushbuttons**

<b>IA</b>  16	<b>AV</b>  22, 30
--	--

The actuator consists of a polyurethane membrane which depresses when the switch is actuated. (IP67)

Withstands any aggressive use. Resistant to demanding environmental requirements (rain, frost, salt, UV), and to vandalism.

### Operator Interface

**HG**

15 inch	8.4 inch	
12.1 inch	5.7 inch	
10.4 inch	4.3 inch	

Excellent visibility by super-bright LED backlight. Withstands harsh environments, and suitable for use in a wide temperature range from cold to hot environment.

# IDEC CORPORATION

[www.idec.com](http://www.idec.com)

## Head Office

6-64, Nishi-Miyahara-2-Chome, Yodogawa-ku, Osaka 532-0004, Japan

<b>USA</b>	IDEC Corporation	Tel: +1-408-747-0550	opencontact@idec.com
<b>Germany</b>	APEM GmbH	Tel: +49-40-25 30 54 - 0	service@eu.idec.com
<b>Singapore</b>	IDEC Izumi Asia Pte. Ltd.	Tel: +65-6746-1155	info@sg.idec.com
<b>Thailand</b>	IDEC Asia (Thailand) Co., Ltd	Tel: +66-2-392-9765	sales@th.idec.com
<b>Australia</b>	IDEC Australia Pty. Ltd.	Tel: +61-3-8523-5900	sales@au.idec.com
<b>Taiwan</b>	IDEC Taiwan Corporation	Tel: +886-2-2577-6938	service@tw.idec.com

<b>Hong Kong</b>	IDEC Izumi (H.K.) Co., Ltd.	Tel: +852-2803-8989	info@hk.idec.com
<b>China/Shanghai</b>	IDEC (Shanghai) Corporation	Tel: +86-21-6135-1515	idec@cn.idec.com
<b>China/Shenzhen</b>	IDEC (Shenzhen) Corporation	Tel: +86-755-8356-2977	idec@cn.idec.com
<b>China/Beijing</b>	IDEC (Beijing) Corporation	Tel: +86-10-6581-6131	idec@cn.idec.com
<b>Japan</b>	IDEC Corporation	Tel: +81-6-6398-2527	marketing@idec.co.jp

Specifications and other descriptions in this brochure are subject to change without notice.  
Information in this brochure is current as of December, 2019.  
2019 IDEC Corporation, All Rights Reserved.

EP1723-1

