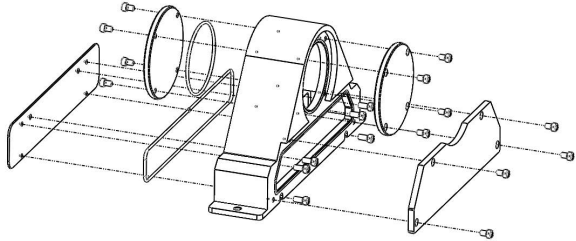
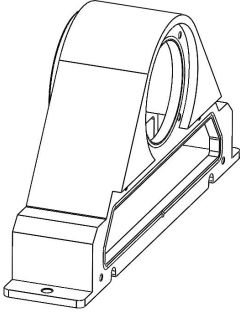


IPPC Series Flange Adapter Installation Guide

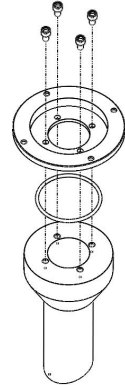
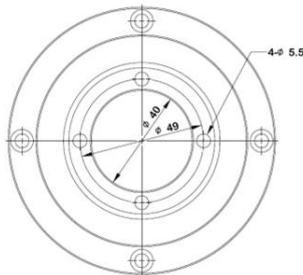
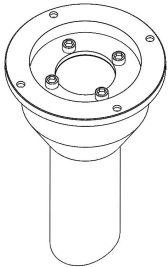
Assembly Instructions

The IPPC-5xxx flange adapter is designed for all IPPC-5xxx series models from 18.5" to 21.5". The purpose of this structure is for connecting between the front panel and the arm or foot system in order to fulfill the various applications in different customers' production lines. With the flange adapter, the product could reach all-around IP69k waterproof level.

- IPPC-5211WS-EMKE(Flange adapter)



- Metal tube (Customization)



Packing List

Contact Advantech if any of the following parts are missing.

- IPPC-5211WS-EMKE as a flange adapter
- Packet of Screws

Notes

For more information on this and other Advantech products, please visit our websites at:

<http://www.advantech.com>

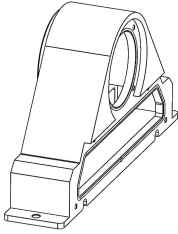
For technical support and service:

<http://www.advantech.com/support/>

This installation guide is for TPC Series Desktop Installation Guide.

Connection Guide

1. Taking the flange adapter from the product assembly box.



2. Using four screws to fasten the flange adapter to the metal tube.

3. Taking the PC product from the product box and fasten the PC product to the flange adapter.

4. Using two screws to fasten the PC product to the flange adapter.

5. Assembling cable and using four screws to fasten the cover sheet of flange adapter.

6. After locking the screws, installation is complete.

