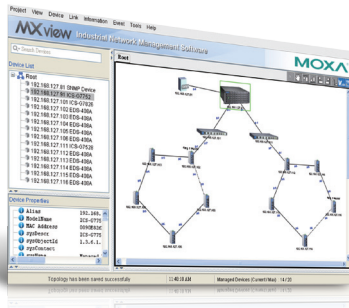


# MXview



## Industrial network management software designed for converged automation networks



- Event Playback records network events, and replays past network incidents
- Discovers and visualizes network devices and physical connections automatically
- Provides central management of configurations and firmware for Moxa devices
- Supports third-party devices with MIB compiler and MIB browser
- Provides comprehensive reports, including inventory, traffic, and availability reports
- Generates OPC 2.0 compliant tags automatically to integrate with SCADA/HMI applications

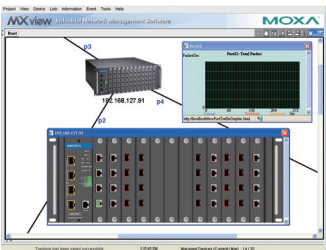
### Introduction

Moxa's MXview network management software is designed for configuring, monitoring, and diagnosing networking devices in industrial networks. MXview provides an integrated management platform that can discover networking devices and SNMP/IP devices

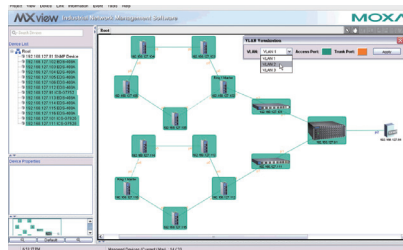
installed in subnets. All selected network components can be managed graphically via web browser from both local and remote sites—anytime and anywhere.

### Visualization

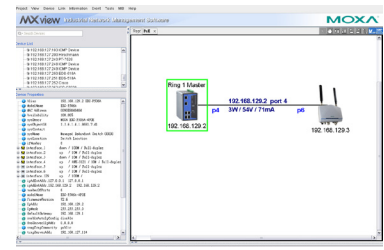
- Discovers up to 2,000 Moxa devices and SNMP/ICMP devices within scan range
- Visualizes redundant link status and device roles of network redundancy protocols
- Graphic VLAN groups and IGMP snooping roles visualization
- Device front panel visualization, including ports and LED indicators
- Visualizes managed PoE device power consumption
- Displays third-party device icons



Virtual Device Panel



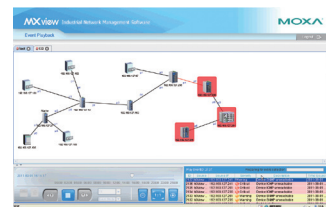
VLAN Visualization



PoE Visualization

### Network Diagnostics and Event Notification

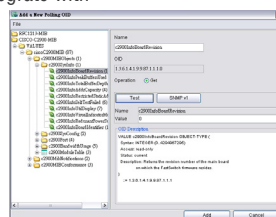
- Event Playback records network events, and replays past network incidents
- Generate trend graphs to track bandwidth utilization and error packet rate statistics, accurate to four decimal points
- Detect problems in real-time with SNMP trap/inform, or periodic polling
- Configurable event notification alarms sent through SMS and email, or locally through program notifications and audio alerts
- Real-time device availability monitoring
- Supports third-party devices with MIB compiler and MIB browser
- Collaborates with third-party NMS through SNMP traps
- Generates OPC 2.0 compliant tags automatically to integrate with SCADA/HMI applications.



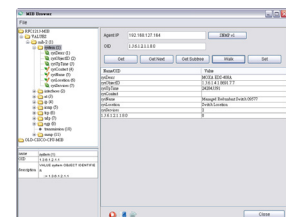
Event Playback



Traffic Monitoring



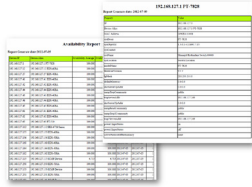
MIB Compiler



MIB Browser

## Comprehensive Reports

- Maintains device availability reports and records for up to 90 days
- Generates an inventory report for each device in the network
- Compiles comprehensive device properties report
- Generates network traffic trend reports



Availability and Inventory Report

## Centralized Configuration and Firmware Management

- Bulk deployment of device configurations and firmware
- In one click, back up the entire MXview database in one click, including topology, job scheduling, events, and device properties
- Scheduling for periodic configuration backup
- Save history of configuration changes
- Comparison tool for checking differences between 2 configurations

## System Requirements

<b>CPU</b>	2 GHz or faster dual core CPU
<b>RAM</b>	2 GB
<b>Hard Disk Space</b>	10 GB
<b>OS</b>	Windows XP Professional, Windows 7 (32/64-bit), Windows Server 2008 (32/64-bit)

## Ordering Information

### Commercial Versions

**MXview-2000:** Industrial network management software with a license for 2000 nodes (by IP address)

**MXview-1000:** Industrial network management software with a license for 1000 nodes (by IP address)

**MXview-500:** Industrial network management software with a license for 500 nodes (by IP address)

**MXview-250:** Industrial network management software with a license for 250 nodes (by IP address)

**MXview-100:** Industrial network management software with a license for 100 nodes (by IP address)

**MXview-50:** Industrial network management software with a license for 50 nodes (by IP address)

### License Upgrade

**MXview Upgrade-50:** License expansion of MXview industrial network management software by 50 nodes (by IP address)

### Trial Version

**MXview Trial Version:** A free trial version of MXview is available for download from Moxa's website

### Package Checklist

- MXview CD (includes the MXview software and related documents)

## Supported Devices

MXview v2.3 supports the following devices by default.

Series	Model Name	Firmware	Series	Model Name	Firmware	Series	Model Name	Firmware
AWK Series	AWK-3121/4121	1.6 or higher	IKS Series	IKS-6524/6526/6726/6728	2.6 or higher	NPort Series	NPort S8455/S8458	1.3 or higher
EDR Series	EDR-G902	1.0 or higher		IKS-6726-8PoE	3.0 or higher		NPort 5110	2.4 or higher
	EDR-G903	2.1 or higher		IKS-G6524	1.0 or higher		NPort 5130/5150	3.4 or higher
EDS Series	EDS-405A/408A/505A/508A/510A/516A/518A/G509/728/828	2.6 or higher		IKS-G6824	1.1 or higher		NPort 5210/5230/5232	2.6 or higher
	EDS-608/611/616/619	1.1 or higher	PT-508/510	3.0 or higher	NPort 5410/5430/5450		3.9 or higher	
	EDS-P506A-4PoE	2.6 or higher	PT-7528	3.0 or higher	NPort 5600-8-DT/5650-8-DT		2.2 or higher	
	EDS-P510	2.6 or higher	PT-7710	1.2 or higher	NPort 5600		3.5 or higher	
EOM Series	EDS-P510A-8PoE	3.1 or higher	PT-7728/7828	2.6 or higher	NPort 5610-8-DTL/5650-8-DTL		1.1 or higher	
	EOM-104/104-FO	1.2 or higher	PT-G7509	1.1 or higher	NPort 5110A/5130A/5150A/5210A/5230A/5250A		1.1 or higher	
ICS Series	ICS-G7526/G7528	1.0 or higher	TN Series	TN-5508/5510	1.1 or higher		NPort IA5150/IA5250	1.4 or higher
	ICS-G7748/G7750/G7752	1.2 or higher		TN-5516/5518	1.2 or higher		NPort IA5150A/IA5250A	1.1 or higher
	ICS-G7848/G7850/G7852	1.2 or higher	ioLogik Series	TN-5508-4PoE/5516-8PoE	2.6 or higher		NPort IA5450A	1.2 or higher
ICS-G7826/G7828	1.1 or higher	ioLogik E2210/E2212/E2214/E2240/E2242/E2260/E2262		3.7 or higher	NPort 6150/6250/6450		1.9 or higher	
IEX Series	IEX-402-SHDSL	1.0 or higher		ioLogik W5312	1.7 or higher		NPort 6610-8/6610-16/6610-32	1.9 or higher
			ioLogik W5340	1.8 or higher	NPort 6650-8/6650-16/6650-32	1.9 or higher		
			MGate Series	MGate 5102-PBM-PN	1.0 or higher	NPort 5150AI-M12/5250AI-M12/5450AI-M12	1.0 or higher	

Note: Additional model names will be added in the near future. Please check Moxa's website for the most up-to-date information.