

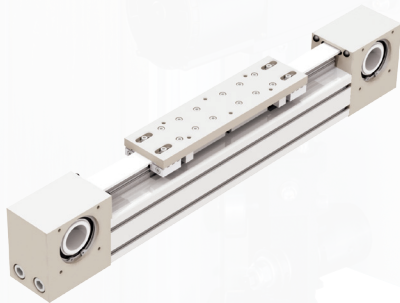
LINEAR ACTUATORS

WHAT YOU NEED TO KNOW

The Linear Actuator Line is complete with belt or ball screw drives and various guidance methods. High load capacity, fast and precise moves as well as smooth operation, are but a few of the highlights for Rollon Linear Actuators. With one of the most complete actuator product ranges in the Industry, Rollon is always able to solve your application needs.

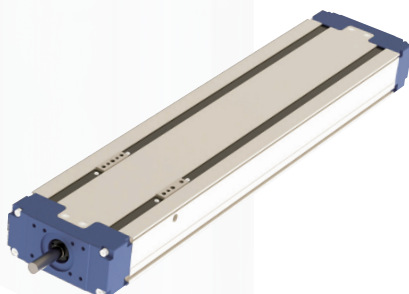
Belt Driven Actuator

- High travel speeds
- Ability to span long distances
- Steel reinforced polyurethane belt



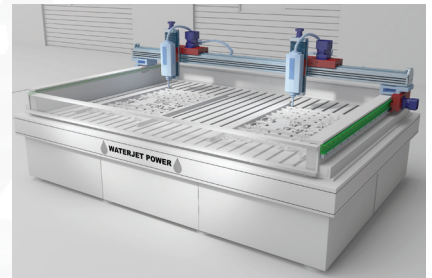
Ball Screw Driven Actuator

- High precision and axial forces
- Rigid and compact
- Complete Cartesian Systems available

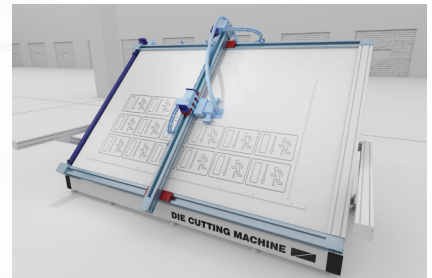


WHERE WE SELL

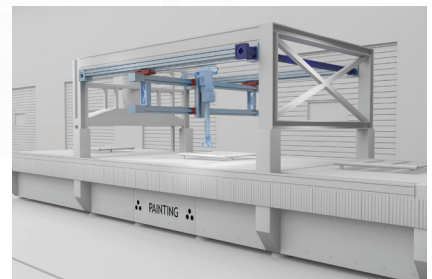
Water Jet



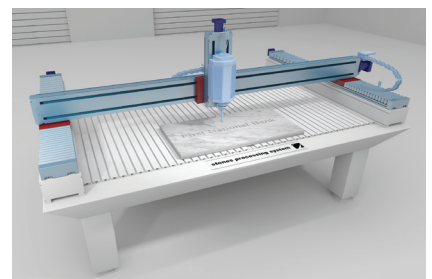
Die Cutter



Printing Robot



Marble Engraving



LINEAR & TELESCOPIC SOLUTIONS

Cam Guided Rail



Profiled Rail



Telescopic Rail



ACTUATOR SOLUTIONS

Belt Driven Actuator



Ball Screw Driven Actuator



3-Axis Plug and Play System

