

March 14, 2013

Setting up the AWK-1121 to Connect to an Access Point

Overview

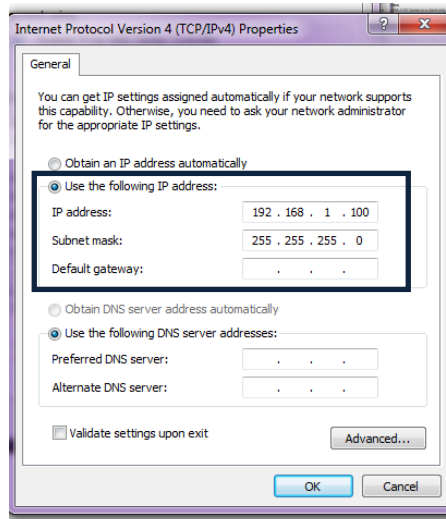
The AWK-1121 Series is a client only industrial wireless device that is used to connect to existing access points to bring edge devices such as PLCs, HMI and other Ethernet based control and instrumentation devices to an existing wireless network. In this TechCorner, I will show step by step on how to configure the AWK-1121 to tie in an Access Point.

- Power Up the AWK-1121 connect the Antenna to the main port and connect the LAN port to your computer

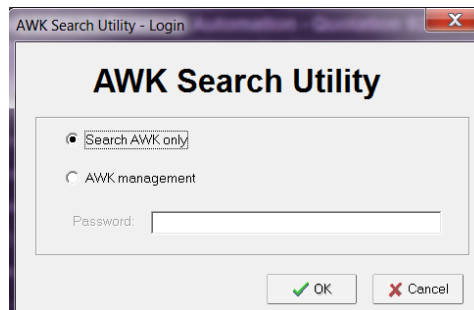


- Ensure you set the IP address of your LAN connection to be static and assign an IP address to the computer.

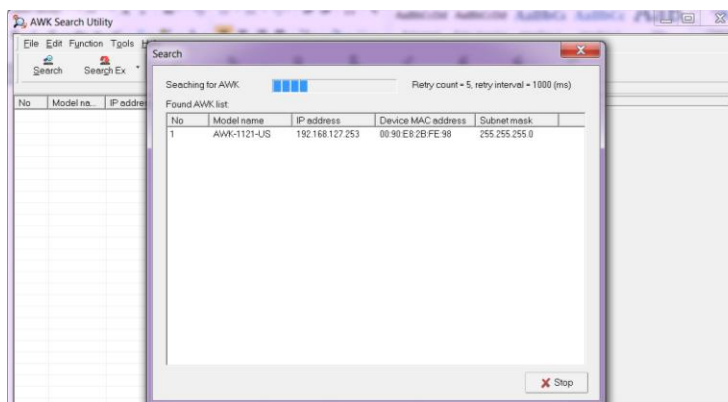
- For now, it does not have to be the exact network address as the AWK-1121. You can use the search utility software to find out what network address your computer has to be.



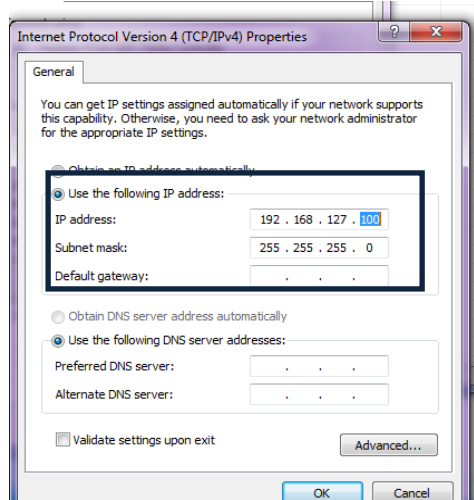
- Run the AWK-Search Utility and click search “Search AWK Only”
 - Click OK



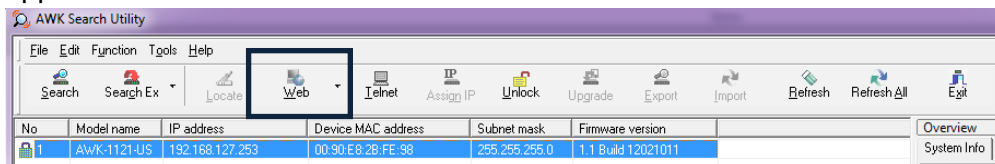
- The Utility will run and click Search at the top left corner. A Pop-up will appear and start populating AWK Wi-fi devices connected in the network.



- Change the computer's IP address so it will be part of the Network as the AWK.



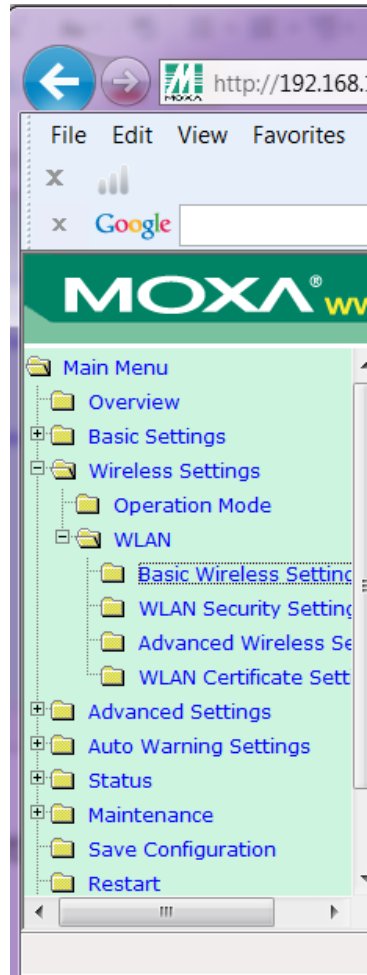
- Click on the **Web** button on top of the AWK Search Utility and web-browser should appear.



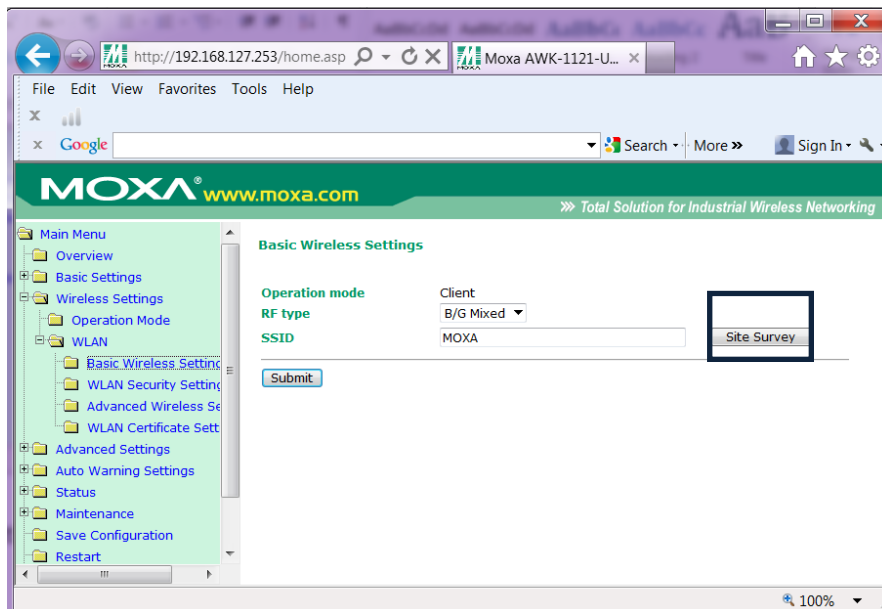
- Type the username/password: admin/root respectively



- Navigate to the “Basic WLAN Setting” by clicking Wireless Settings=>Basic WLAN Settings.



- Click on Site Survey. A pop-up should appear and all the Local Access Points will populate.



- Choose the Access Point you would like the AWK-1121 to connect to then Click Submit.

ID	SSID	BSSID	Channel	Security	Signal Strength
1	bluetip	00:11:50:CF:38:B1	1	BSS/WPA1/PSK	(-81dBm)
2	ATT7130	74:44:01:15:CD:CC	1	BSS/WPA2/PSK	(-84dBm)
3	QA	00:15:62:FF:84:1D	2	BSS/WPA2/PSK	(-60dBm)
4	Et All	A0:21:B7:B9:87:F5	11	BSS/WPA1/PSK	(-86dBm)
5	IHub_00603505a553	00:0E:8F:71:62:54	11	BSS/WPA2/PSK	(-89dBm)
6	Netness1	E0:91:F5:89:1E:3A	11	BSS/WPA2/PSK	(-61dBm)
8	WIFIRSU_c795e	20:10:7A:7C:64:1E	8	BSS/WPA2/PSK	(-90dBm)
9	4415 5670	00:24:C8:90:FF:70	6	BSS/WPA2/PSK	(-85dBm)
10	GOMAR	20:4E:7F:1E:27:8E	11	BSS/WPA2/PSK	(-92dBm)
11	OCMAA	00:26:42:4B:7E:60	6	BSS/WEP	(-85dBm)
12	3646 1162	00:26:42:7A:44:30	6	BSS/WEP	(-76dBm)
13	1347 0023	00:24:93:2E:54:80	6	BSS/WEP	(-85dBm)
15	HPC4E090	02:26:66:42:E4:11	10	Ad Hoc/OPEN	(-92dBm)

- If the network has security, click WLAN Security Setting on the left menu and type in the security.
 - Click Submit

MOXA www.moxa.com Total Solution for Industrial Wireless Networking

WLAN Security Settings

SSID: QA

Security mode: WPA2

WPA type: Personal

Encryption method: TKIP

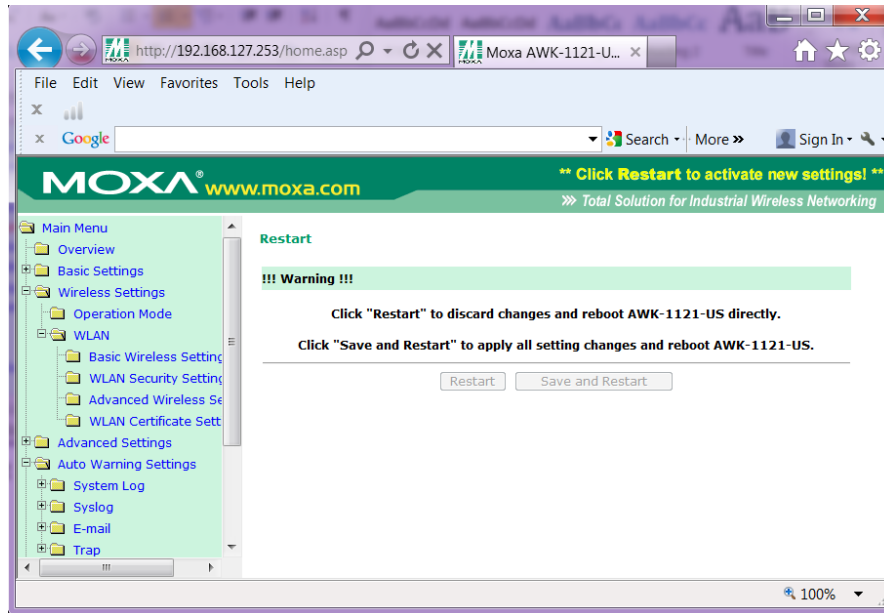
EAPOL version: 1

Passphrase:

Submit

Restart

- Click Restart to activate new settings! At the top right of the web page.



- Once the device restarts, wait a few seconds and the WLAN and Signal level will appear.



- Congratulations the AWK-1121 has been set-up and connected to the desired Access Point.