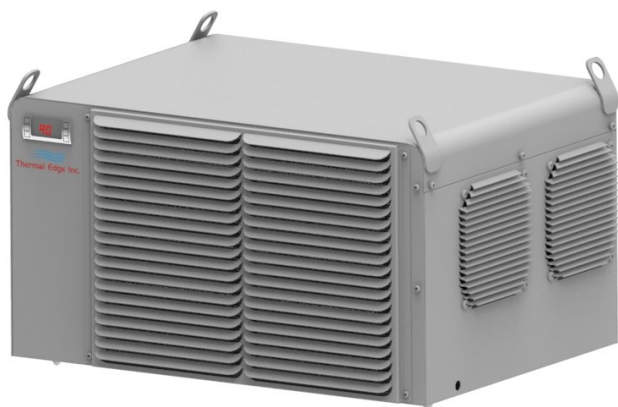


## TM081

### 8000 BTUH TOP MOUNT

Indoor/Outdoor, NEMA Types 12, 4 & 4X Available

Engineered & manufactured to endure the most difficult of environments and applications. Thermal Edge air conditioners will exceed environmental requirements in applications like *Steel, Food Processing, Petro-Chemical, Cement, Paper & Pulp and Plastics.*



No water drips from Thermal Edge enclosure air conditioners

#### Options:

- Flat or pleated condenser filters
- Dry Contact Alarm Capabilities
- Open Door Kill Switch
- Corrosive Environment Package
- Low Ambient Packages
- Remote Monitoring Options
- Integrated Enclosure Heat System
- Air Outlet Extension (38" total width)

#### Digital Temperature Controller

- Programmable set point and temperature controls
- Visible Error and/or alarm messaging
- System status indication & keypad lockout function

#### Active Condensate Evaporation System

- Constant elimination of condensate
- Increases unit efficiency by pre-cooling refrigerant

#### Key Design Features

- Designed with rigid chassis and seam welded shroud
- Thoughtful interior design for easy maintenance
- Integrated lifting eyes

#### Unit Efficiency

- Highly efficient rotary compressor
- Fully insulated & sealed cabinet
- Thermal Expansion Valve to maintain cooling capacity over a broad ambient temperature range

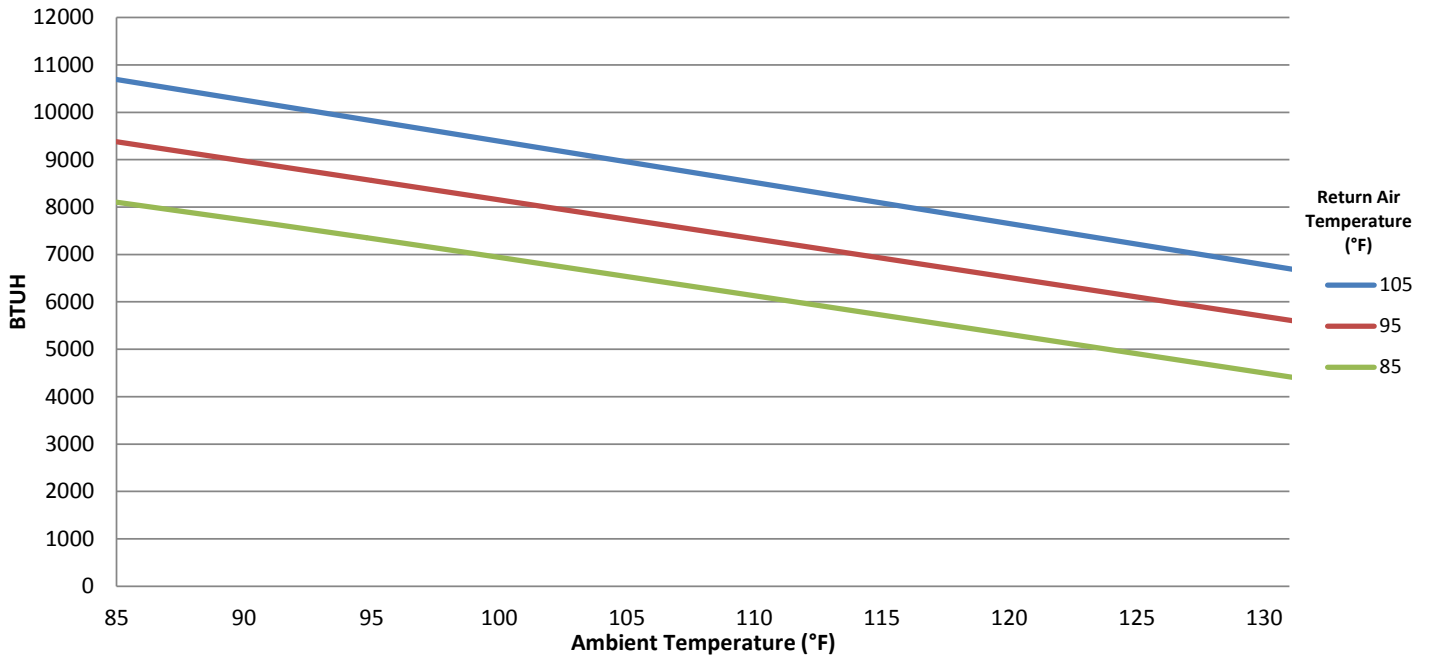
#### Filter Free Operation

#### Compressor Protection System

- High & Low refrigerant cutouts with fault indication
- Compressor anti short cycle protection
- Compressor run capacitors reduce power inrush, save energy and increase compressor life

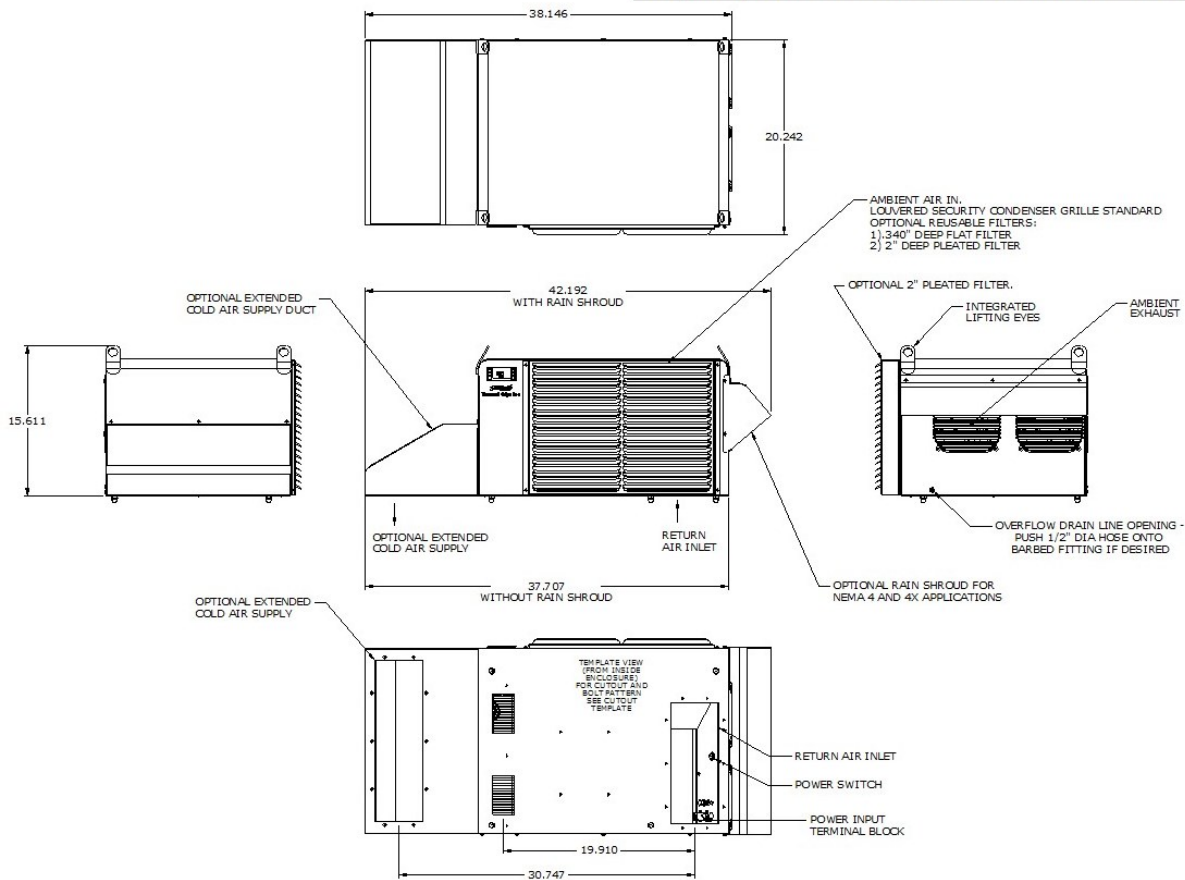
Model	BTU/ Hour	Material	Voltage Phase Hz.	Running Amps	Max. Ambient Temperature	H x W x D	Weight (lbs.) Unit / Ship
TM081-126-12	8000	Powder coated steel	120V/1/60	11.2	131°F	15.6" x 26.3" x 20.2"	111 / 163
TM081-126-04	8000	Powder coated steel	120V/1/60	11.2	131°F	15.6" x 26.3" x 20.2"	111 / 163
TM081-126-4X	8000	Stainless steel	120V/1/60	11.2	131°F	15.6" x 26.3" x 20.2"	111 / 163
TM081-236-12	8000	Powder coated steel	230V/1/60	7.0	131°F	15.6" x 30.6" x 20.2"	111 / 163
TM081-236-04	8000	Powder coated steel	230V/1/60	7.0	131°F	15.6" x 30.6" x 20.2"	111 / 163
TM081-236-4X	8000	Stainless steel	230V/1/60	7.0	131°F	15.6" x 30.6" x 20.2"	111 / 163
TM081-486-12	8000	Powder coated steel	480V/1/60	3.5	131°F	15.6" x 30.6" x 20.2"	154 / 206
TM081-486-04	8000	Powder coated steel	480V/1/60	3.5	131°F	15.6" x 30.6" x 20.2"	154 / 206
TM081-486-4X	8000	Stainless steel	480V/1/60	3.5	131°F	15.6" x 30.6" x 20.2"	154 / 206

# TM081



Testing done under controlled conditions. Actual performance may vary

## TOP MOUNT TM061 (6,000 BTU/H) AND TM081 (8,000 BTU/H) 120V, 230V, AND 480V MODELS WITH EXT. COLD AIR SUPPLY



2016-07-18



All information subject to change without notice

